

## Mission Maritim Matematik - Skibslogbog

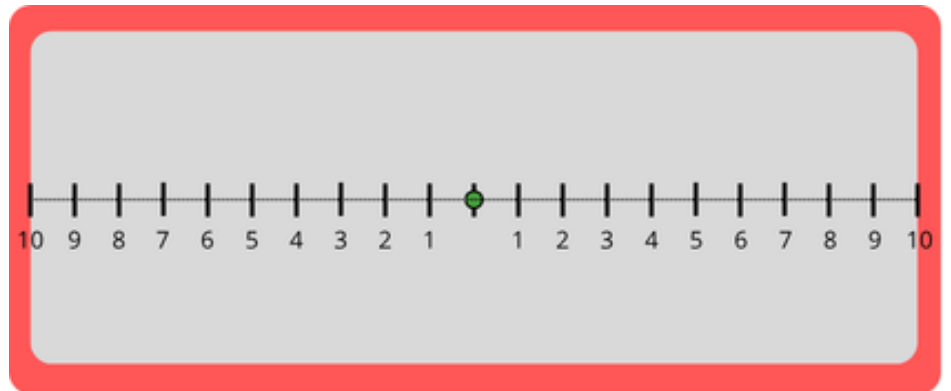
<b>Sejlads</b>	<b>Fra</b>	<b>Til</b>		<b>Dato</b>	
<b>Besætning</b>					
<b>Vejr</b>					

<b>Information om last</b>	<b>Container 1</b>	<b>Container 2</b>

**Placering af containere**

$$l_{con1} = \frac{\quad \cdot l_{con2}}{\quad}$$

$l_{con1}$	$l_{con2}$

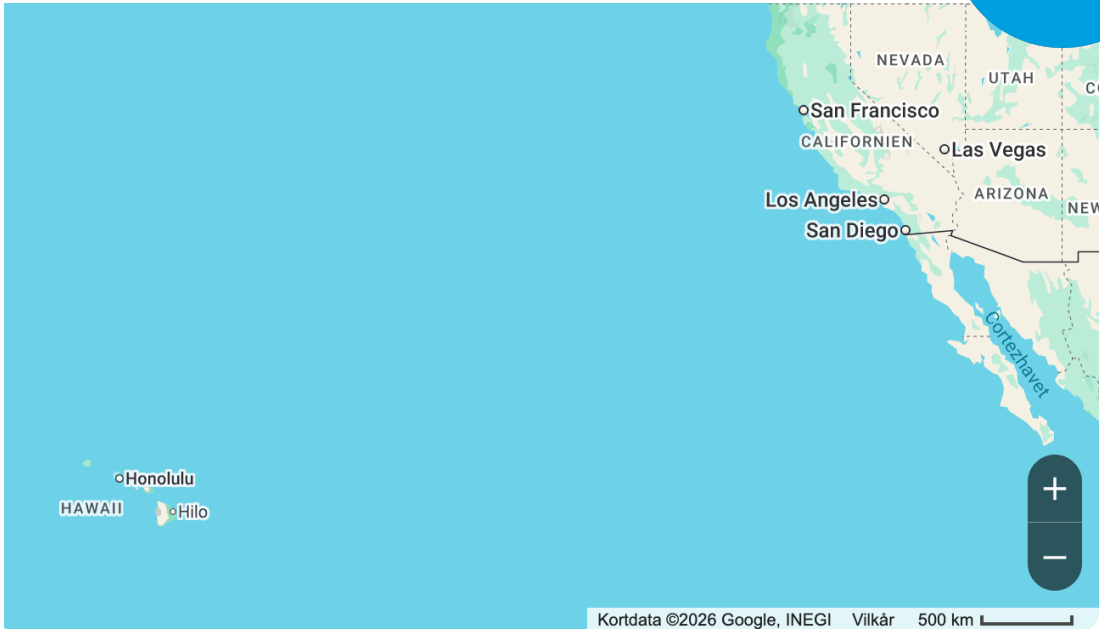


$l_{con1} =$	$l_{con2} =$
--------------	--------------

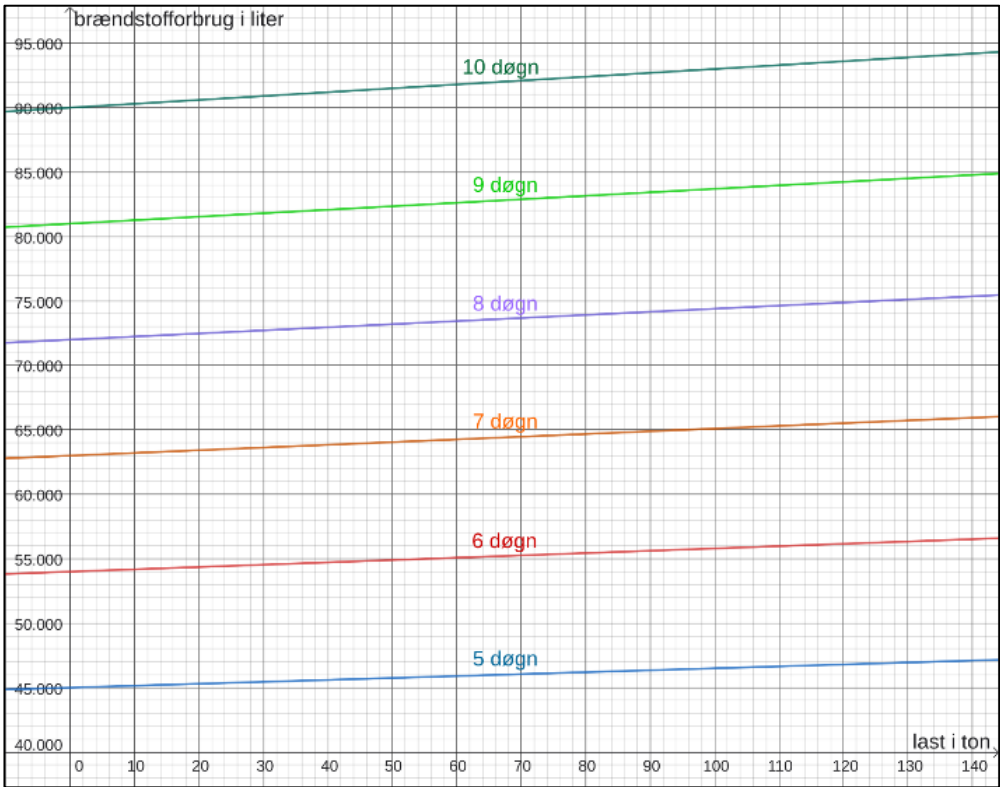
**Position og destination**

	Honolulu, Hawaii	Los Angeles, USA	
Decimalgrader	21,312935°, -157,846731°	Decimalgrader	
Bueminutter og -sekunder		Bueminutter- og sekunder	34°03'08" N, 118°14'37" V

Distance

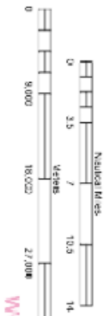


Brændstof

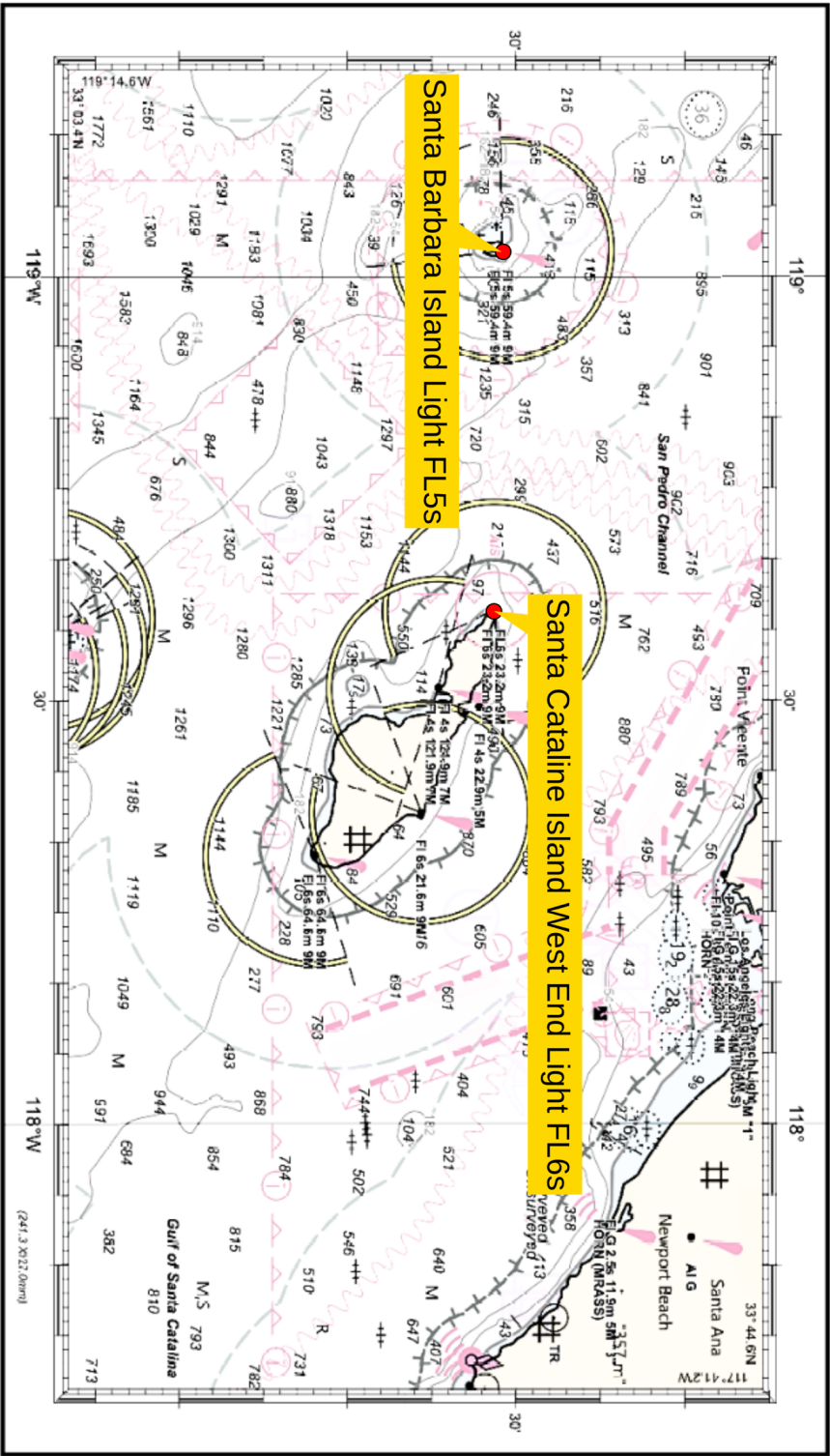


UNITS IN METERS

Custom Chart



WGS 84



WGS 84

Generation Date: 4/28/2021  
Page Size: A4 - 210 x 297 mm (landscape)



Projection Information  
WGS 1984 World Mercator (Calculated)  
SCALE 1:600000 at Lat. 33°24.04'  
GCS WGS 1984

Additional information can be obtained at [www.nauticalcharts.noaa.gov](http://www.nauticalcharts.noaa.gov).

NOAA encourages users to submit inquiries, discrepancies, or comments about this chart via NOAA's ASSIST tool at <https://www.nauticalcharts.noaa.gov/customer-service/assist/>.

UNITS IN METERS

To ensure that this chart was printed at the proper scale, the line above should measure six inches (152 millimeters).

